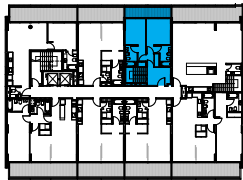
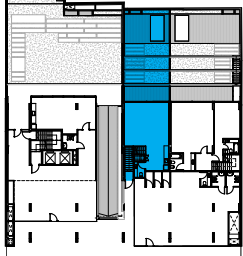


UBICACIÓN
P.B. y PISO 1



UNIDAD
03

UNIDAD 03 DUPLEX

SUP. CUB. PB: 56,52m²

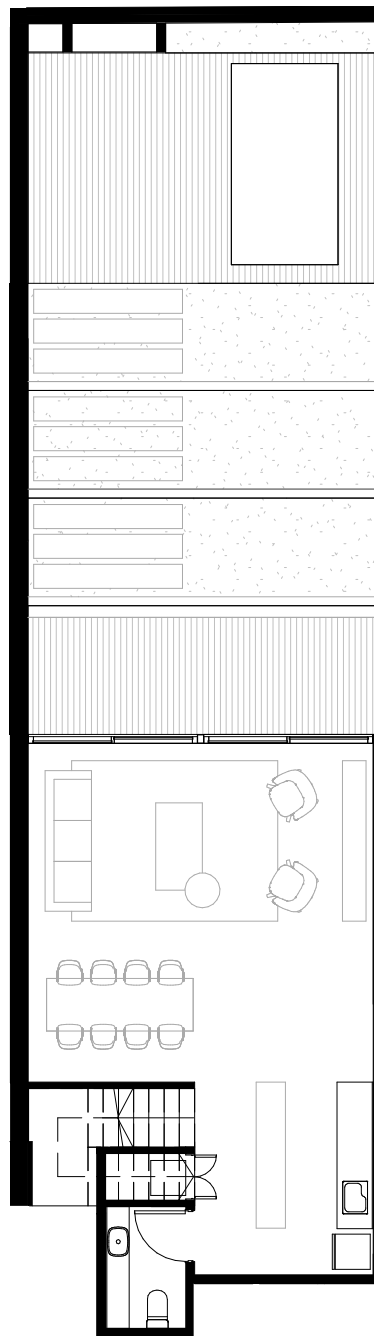
SUP. CUB. 1º: 47,40m²

SUP. TERRAZA (semicub.): 22,31m²

JARDIN: 58,63m²

SUP AMENITIES: 7,78m²

SUP. TOT.: 192,64m²



calle Soler

